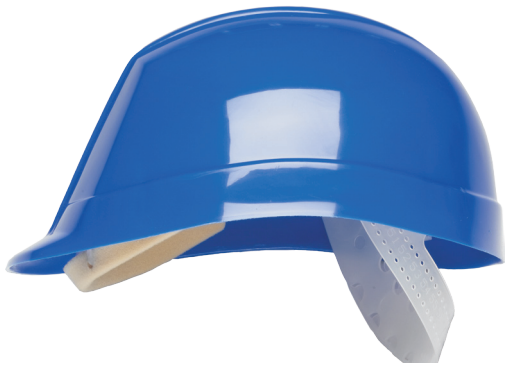


TECHNICAL DATASHEET

HC31/HC36 BUMPMASTER



DESCRIPTION

Bumpmaster Bump Cap with HDPE shell and four-point HDPE harness (HC36) or four-point terylene harness (HC31) - Weight approx. 200 g

APPLICATIONS

These products are suitable for general use in industry to protect the wearer's head from bumps and scrapes. The Bumpmaster Bump Cap meets the requirements of EN812 for use where there are minor risks from impact to the head. The Bumpmaster is particularly suited to areas where hygiene is important to the wearer.

APPROVALS

CE Certified to EN812



MATERIALS

Shell	Injection moulded HDPE (High Density Polyethylene)
Harness Cradle	25 mm HDPE (HC36) or Nylon (HC31) webbing
Harness Segments	Injection moulded H.D.P.E
Harness Headband	Injection moulded L.D.P.E.
Harness Sweatband	None (HC36) or Foam (HC31)

MAINTENANCE

Bump caps should be inspected prior to use for deterioration or damage and any defective parts replaced. Bump caps with damaged shells, eg; with cracks, dents or excessive abrasion must be discarded. Bump caps that have been in service for longer than 2 years should be carefully inspected for deterioration. Follow up periodic sampling and testing is recommended.

CLEANING

A brush can be used to remove stubborn marks from the shell. Prior to washing the harness should be removed from the shell to facilitate cleaning. The use of solvents, very hot water or harsh abrasives is not recommended. Disposal: As the helmet is subject to dirt, dust etc. during use, the helmet cannot be recycled. Disassemble and dispose of as solid waste.



Thank you for reading this data sheet.

For pricing or for further information, please contact us at our UK Office, using the details below.



UK Office

Keison Products,

P.O. Box 2124, Chelmsford, Essex, CM1 3UP, England.

Tel: +44 (0)330 088 0560

Fax: +44 (0)1245 808399

Email: sales@keison.co.uk

Please note - Product designs and specifications are subject to change without notice. The user is responsible for determining the suitability of this product.