

## IntelliDoX How To: Configure BW Clip Settings with IntelliDoX using Fleet Manager II software

Certain features, options and settings related to module or detector operations can be configured via Fleet Manager II software. This section contains general instructions for creating and transferring configuration files to IntelliDoX modules and configuring BW Clip detectors via Fleet Manager II software.

Throughout the entire operation life of the BW Clip, you can use Fleet Manager II to enable an IntelliDoX module to configure these BW Clip detector settings:

- Set the low and high alarm settings.
  - H<sub>2</sub>S: 1.6 ppm – 20 ppm (1.6, 1.7, 1.8, 1.9, 2, 3, ...).  
(The only settings with tenths are 1.6 through 1.9.)
  - CO: 5 ppm – 200 ppm
  - O<sub>2</sub>: 18.0% – 25.0%
  - SO<sub>2</sub>: 2 ppm – 20 ppm
- Display the current time on the detector.
- Display the actual time of a peak reading event.
- Display the gas reading during an alarm event.
- Set a bump test reminder schedule between one day and 180 days.
- Enable the Non-Compliance Indicator on the BW Clip after a gas exposure.

You can also use Fleet Manager II to configure automatic operations when a BW Clip detector is inserted into an IntelliDoX module:

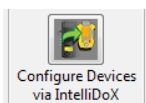
- Apply available detector firmware upgrades.
- Apply any specified changes to detector settings.
- Synchronize detector time and date.
- Bump test the detector upon insertion — with no need for the user to press a button.
- Enable FastBump, the accelerated bump test sequence.
- Enable Hibernation.

**Note:** IntelliDoX modules can be connected to a PC or a Network as a **Wired** connection using the integrated Ethernet port within the IntelliDoX to transfer Detector Configurations. Users can also save the detector configuration to a USB Flash Drive to manually transfer the configuration to a **Stand-Alone** IntelliDoX.

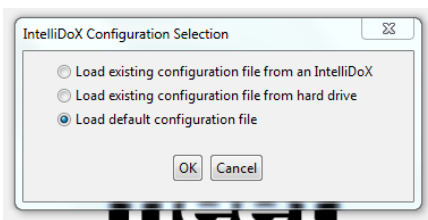
## Configure IntelliDoX and BW Clip Settings

Certain features, options and settings for the IntelliDoX module and/or compatible detectors can be configured through Fleet Manager II software. You must use Fleet Manager II software to create a configuration file that is compatible with the IntelliDoX. After the configuration file is created, transfer it to one or more modules, automatically through a wired Ethernet connection or manually by transferring the configuration file with a USB drive, to implement the new configuration settings.

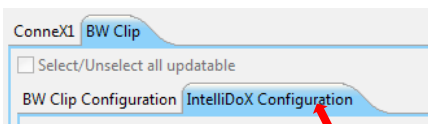
1. Start Fleet Manager II software, and then log in as an administrator.
2. Select **Configure Devices via IntelliDoX** on the Devices menu. The **IntelliDoX Configuration Selection** dialog box is displayed.



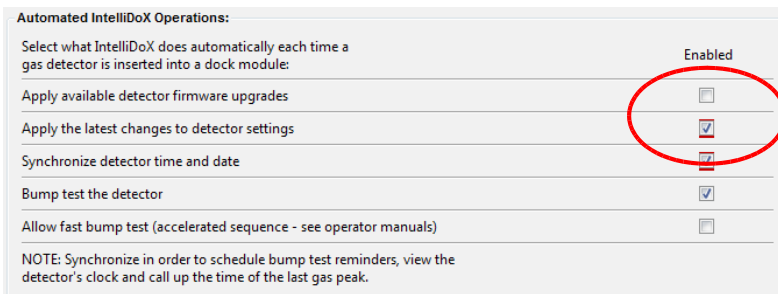
3. Select a configuration file and click OK.



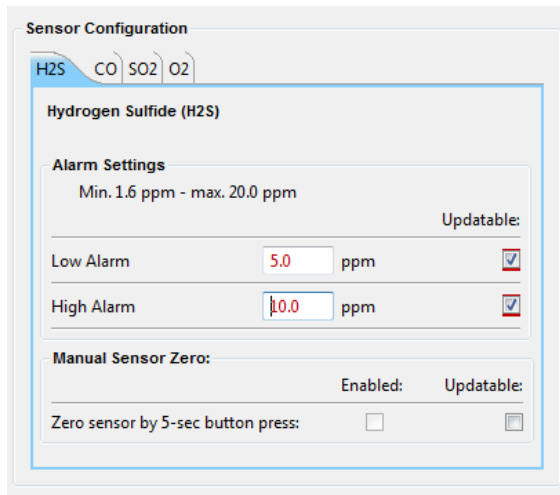
4. Select the IntelliDoX Configuration tab.



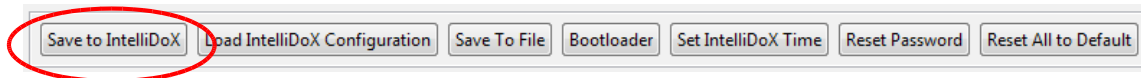
5. Modify the Automated IntelliDoX Operations features. Select **Apply the latest changes to detector settings** and **Synchronize detector time and date**.



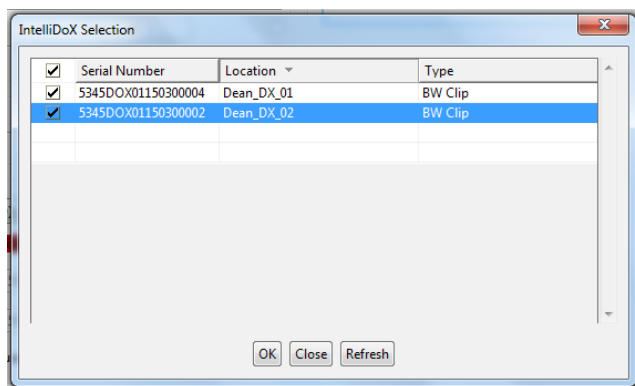
6. Select the BW Clip Configuration tab. Modify the available detector features, options and settings as required. Select the Sensor Configuration of the BW Clip H2S Alarm Settings to **Updatable** button, then change the Low Alarm to 5.0 ppm and High alarm to 10.0 ppm.



7. Once you've completed configuring the settings for your BW Clip detectors click **Save to IntelliDoX**.



8. The **IntelliDoX Selection** dialog box is displayed. Select one or more IntelliDoX modules, and then click OK.





Thank you for reading this data sheet.

For pricing or for further information, please contact us at our UK Office, using the details below.



**UK Office**

**Keison Products,**

**P.O. Box 2124, Chelmsford, Essex, CM1 3UP, England.**

**Tel: +44 (0)330 088 0560**

**Fax: +44 (0)1245 808399**

**Email: [sales@keison.co.uk](mailto:sales@keison.co.uk)**

Please note - Product designs and specifications are subject to change without notice. The user is responsible for determining the suitability of this product.