



R-Log



Quick Start

Update 12/19/2013

Summary

1.	Introduction.....	3
2.	To start... ..	3
3.	First installation	3
3.1.	Installing the software on your PC.....	6
3.1.1.	Installation procedure.....	6
3.1.2.	3DOM Software.....	6
3.2.	Datalogger configuration	7
3.2.1.	Starting the instrument.....	7
3.2.2.	Auto- recognition of the connected probes	8
3.2.3.	Adding the new instrument to 3DOM program.....	8
3.2.4.	Checking the instrument internal clock	9
3.2.5.	Instrument configuration.....	9
3.3.	Creating a configuration report.....	14
3.4.	Connecting the probes.....	14
3.4.1.	Electrical connection.....	14
3.5.	Displaying measures in fast acquisition mode.....	16
3.6.	Starting the system and displaying measurements.....	16
4.	Elaborated data storage options	17
4.1.	Storing data in a text file.....	17
4.2.	Saving data on a Gidas database	17
5.	Receiving elaborated data	20
6.	Displaying elaborated data.....	20

Copyright 2010-2013 LSI LASTEM. All rights reserved.

This manual can be modified without notice.

Anybody can copy, print or publish this manual without LSI LASTEM written authorization.

LSI LASTEM reserves the right to modify the product without an immediate revision of this document.

1. Introduction

This manual is an introduction to the use of the R-Log datalogger.

Reading this manual will allow you to perform the basic operations for starting this device.

Refer to *GidasTea – User manual* (code SWUM_00662) and particularly to the *Step-by-step Guide* accessible from ? menu of GidasTEA program for applications requiring the calculation of microclimate indexes.

For special applications, such as - for example – the use of specific communication devices (modem, communicators, Ethernet/RS232 converters etc.) or where the implementation of actuation logics or the setup of calculated measurements is requested, please refer to the R-Log and 3DOM software User Manuals, that are included in the *MW6501 - LSI LASTEM Products DVD* in the *Manuals – DOCUMENTS* section.

2. To start...

There are the following models of R-Log:

Model	Connector inputs	Terminal board inputs	Master mode	Repeater mode	Slave mode	Ethernet output
ELR510M	X	-	X	-	-	-
ELR510R	X	-	-	X	-	-
ELR510S	X	-	-	-	X	-
ELR515M	-	X	X	-	-	-
ELR515R	-	X	-	X	-	-
ELR515S	-	X	-	-	X	-
ELR516M	-	X	X	-	-	X

Additionally, R-Log is compatible with the following sensors provided with radio communication (S-Log):

- **ELR200:** environment sensors for temperature/ relative humidity;
- **ELR205:** black globe and wet bulb temperature sensors;
- **ELR210:** 2- temperature contact sensor.

The instrument model is indicated on the label located on the back of the instrument and in the information displayed by the datalogger during the first boot phases (§3.2.1).

3. First installation

Basic operations for turning the instrument on depend on the installation typology to be implemented: from the simplest, consisting of a single Master datalogger (Fig. 1), to the more complex, consisting of a Master instrument and of one or more Slave/Repeater devices (Fig. 2 and Fig. 3).



Fig. 1 – A-type installation.



Fig. 2 – B- type installation.

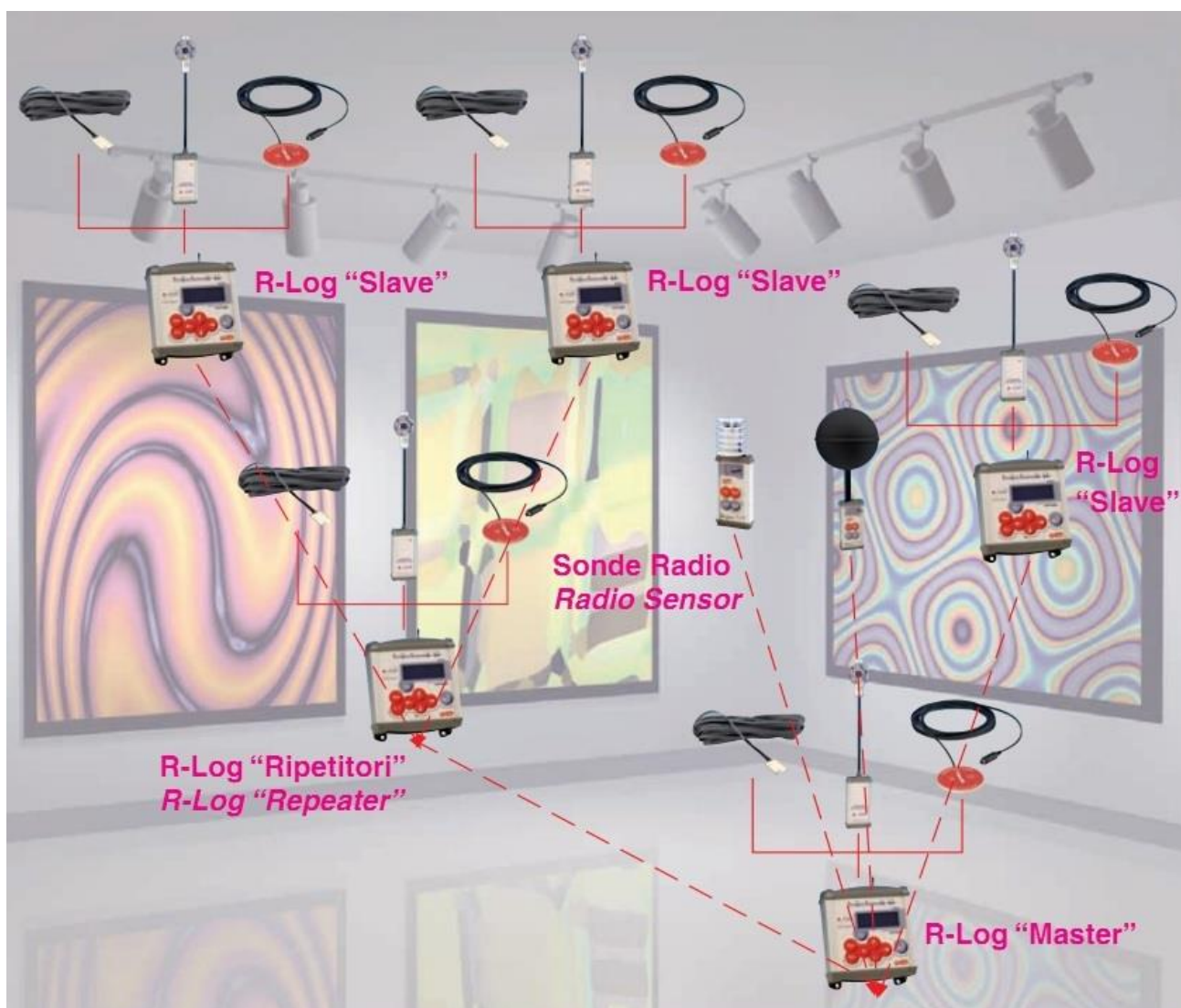


Fig. 3 – C-type installation.

For A-type installation: only one 16M R-Log (ELR515M or ELR5 models)

- Installation of 3DOM software on PC;
- Datalogger configuration with 3DOM software;
- Creation of a *Configuration Report*;
- Connection of the probes to the datalogger;
- Display of measurements in fast acquisition mode.

For A-type installation: only one R-Log (ELR510M model)

- Installation of 3DOM software on PC;
- Connection of probes to the datalogger for auto-recognition;
- Transfer to 3DOM software of the new configuration generated on the datalogger;
- Display of measurements in fast acquisition mode.

For B or C-type installation: one R-Log (ELR515M or ELR516M models) and one or more ELR515S R-LOG Slave and EL515R Repeater

- Installation of 3DOM software on PC;
- Configuration of each Slave/Repeater datalogger with 3DOM software;
- Configuration of the Master datalogger with measurements imported by Slave/Repeater devices;
- Generation of a *Configuration Report* for each datalogger;
- Connection of probes to their dataloggers;
- Measurement display in fast acquisition mode on each datalogger;
- System boot-up and display of all measurements.

For B or C-type installation: one ELR510M-model R-Log and one or more ELR510S Slave R-LOG and ELR510R Repeater

- Installation of 3DOM software on PC;
- Connection of probes to their dataloggers for auto-recognition;
- Transfer to 3DOM software of the new configuration generated on dataloggers;
- Configuration of the Master datalogger with measurements imported by Slave/Repeater devices;
- Measurements display in fast acquisition mode on each datalogger;
- System boot-up and display of all measurements.

Afterwards it will be possible to configure the software for data storage in different formats (text, SQL database and others).

3.1. Installing the software on your PC

To configure your datalogger, you only have to install 3DOM on a PC. However, if this PC is the one that will be used for data management, it is recommended to contextually install all the other software as well along with their licenses of use.

3.1.1. Installation procedure

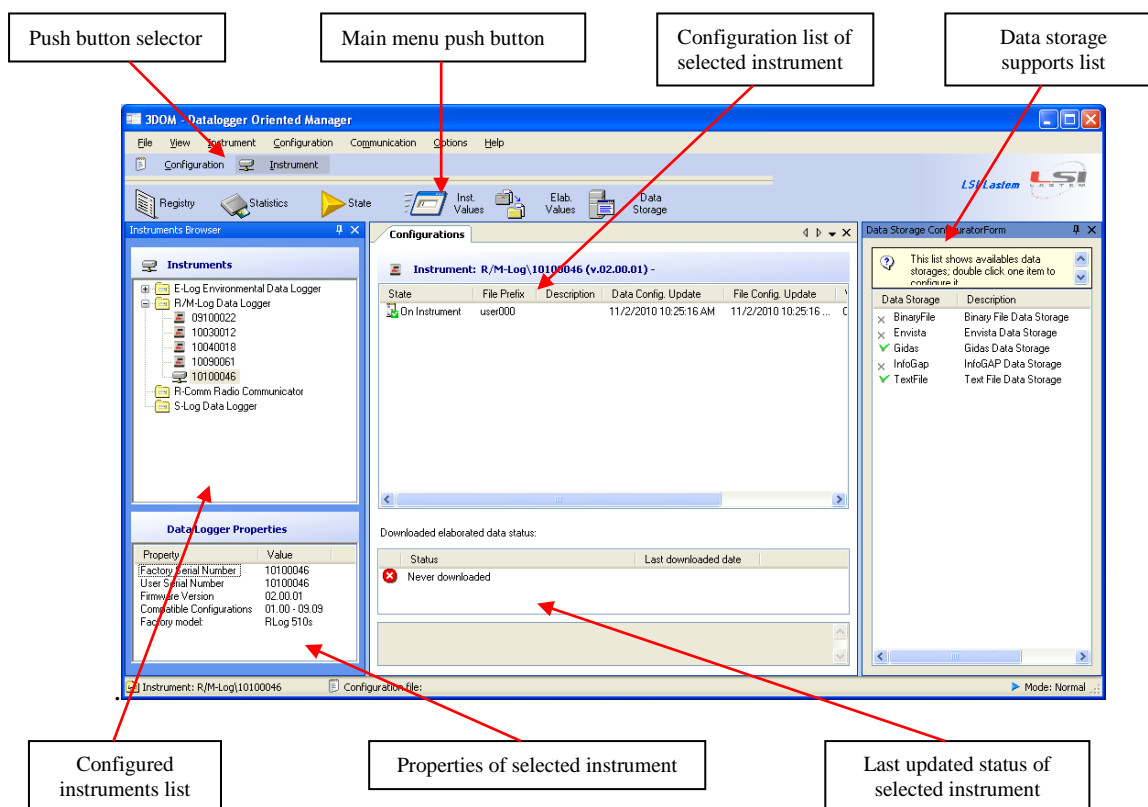
To install the program, proceed as follows:

- Introduce *MW6501 - LSI LASTEM Products DVD* in the DVD reader of your PC;
- Select *Information-Installation* in the *SOFTWARE* section;
- Follow the instructions indicated under *Guided Installation of LSI LASTEM programs* paragraph.

3.1.2. 3DOM Software

Through 3DOM software, you can perform the instrument configuration, change the system date/time and download stored data by saving them in one or more formats.

At the end of the installation procedure, start 3DOM program from LSI LASTEM programs list. The aspect of the main window is as below:



3DOM program uses the Italian language in case of Italian version of the operating system; in case of a different language of the operating system, the program 3DOM uses the English language. To force the use of the Italian or the English language, whatever may be the language used by the operating system, the file “C:\Programmi\LSILastem\3DOM\bin\3Dom.exe.config” will have to be opened with a text editor (for ex. Notepad) and change the value of the attribute *UserDefinedCulture* by setting *en-us* for English and *it-it* for Italian. Below is an example of setting for the English language:

```
<setting name="UserDefinedCulture" serializeAs="String">  
    <value>en-us</value>  
</setting>
```

3.2. Datalogger configuration

Per procedere alla configurazione di uno o più datalogger è necessario eseguire, per ciascuno strumento, le indicazioni di seguito riportate.

For ERL515M, ERL516M, ELR515S and ELR515R models:

- Start the instrument;
- Insert the instrument in 3DOM;
- Check the instrument's internal clock;
- Create the configuration in 3DOM;
- Send the configuration settings to the instrument.

For ELR510M, ELR510S and ELR510R models:

- Connect all probes to the instrument inputs;
- Start the instrument;
- Perform probe auto-recognition;
- Insert instrument and set its configuration on 3DOM;
- Check the instrument's internal clock;
- Modify the configuration in 3DOM;
- Send the configuration settings to the instrument.

3.2.1. Starting the instrument

R-Log is provided with a rechargeable internal battery. All models can also be powered through an external 8 ÷ 14 Vcc (BSC015) power-supply, by means of the connector located on the instrument top panel; in this case the positive pole is the one inside the connector. Ensure not to invert the power supply polarity, even if the instrument is protected against this incorrect operation.

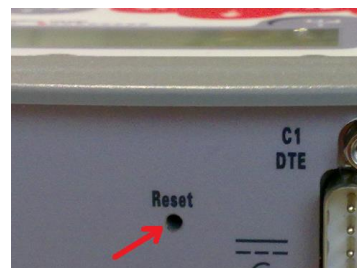
ELR515M, ELR515R, ELR515S and ELR516M models can also be power supplied through the terminal board. Refer to the following table for connection to the instrument input terminals and to sensors or electricity-powered devices output terminals.

Power supply 12V	Model	Signal	Terminal
	ELR515M-R-S	0 Vdc	28 or 29
	ELR516M	+ Vdc	30 or 31
		GND	32



It is recommended, where available, to connect the GND wire (ground wire) to terminal 32.

Before using the instruments, it is advisable to keep them under load for at least 8 hours.

In case of failure to turn the instrument on, press the RESET key inside the hole placed on the instrument top panel through a pointed object (such as a straightened paper clip) and try again the button combination to turn the instrument on; if this remains turned-off, please contact LSI LASTEM.






ATTENTION: in case terminals 5-6 and 16-17 are used to power supply any external devices, these must be provided with a protection circuit against short-circuits or against adsorption currents higher than 1 A.

Start the instrument by pressing simultaneously  and  buttons on the R-Log front panel. The datalogger will display the product presentation window that will remain on the screen for about 10 seconds; when the window disappears, the survey will be automatically started based on the last configuration stored before the instrument shutdown. Refer to §3.2.4 if the system asks to set the clock.

3.2.2. Auto- recognition of the connected probes

This function is only available for ELR510 models.

After sensors have been physically connected, the instrument can be configured for auto-recognition of the probes by simultaneously pressing  and  buttons; press  button to confirm the operation. At the end of the auto-recognition function, a new survey will be started and the instant values window will be automatically displayed.

Attention! This operation will cancel all data stored in memory; if you wish to save stored data, proceed to download data from your PC before confirming the auto-recognition. Additionally, all measurements performed by the connected probes will be reset to default values.

3.2.3. Adding the new instrument to 3DOM program

Connect your PC to serial port 1 through the supplied ELA105 serial cable. Start 3DOM program from the LSI LASTEM programs list, select *Instrument-> New...* and follow the guided procedure. Set as communication parameters:

- Type of communication: *Serial*;
- Serial port: *<indicate the PC port connected with ELA105 serial cable >*;
- Bps speed: *57600*;







Once the instrument has been recognized, additional data can be entered, such as *User-defined name* and *Description*.

Once the data entry procedure has been completed, the program tries to download the calibration data and the factory setup of the device; in the event the communication fails to terminate this operation, it will be impossible to change or create new configurations. At the end of the procedure, the serial number of your instrument will be displayed in the *Instruments* panel.

3.2.4. Checking the instrument internal clock

A few seconds after turning the instrument on, it might ask you to reset its internal clock (date and time). This happens only in particular conditions, for example when the battery is completely discharged; in this case, the setting of date/time is mandatory and cannot be cancelled.

In order to have accurate time data, the datalogger internal clock should be correct. Failing this, the clock can be synchronized with that of your computer through the 3DOM software (*Statistics...* function in *Communication* menu) or change it directly in the date/time window using the following buttons:

-  : accesses *change* mode; exits *change* mode confirming and storing the new date/time;
-  : exits *change* mode discarding any changed values;
-   : moves the cursor to the field to be changed;
-  : increments the value selected by the cursor; other date/time elements can be contextually changed;
-  : decrements the value selected by the cursor; other date/time elements can be contextually changed.

3.2.5. Instrument configuration

If not expressly requested by the customer, the instrument comes from the factory with a standard configuration. This needs to be changed by adding the measurements of the sensors to be acquired.

In brief, these are the operations to be performed:

- Create a new configuration (ELR510 models excluded);
- Add the measurements of the sensors to be connected to the terminal board (ELR510 models excluded);

- Add any measurements of the sensors to be connected to the serial port or to be acquired via radio;
- Set the elaboration rate;
- Set actuation logics (optional);
- Set the instrument operating characteristics (optional);
- Set radio communication parameters;
- Import the measurements of any Slave/Repeater devices (only for R-Log Master);
- Save the configuration and transfer it to the datalogger.

CREATING A NEW CONFIGURATION (ELR510 models excluded)

Once the new instrument has been successfully added to 3DOM, the datalogger basic configuration should appear in the *Configurations* panel (named *user000* by default). It is recommended not to change this configuration as, in the event of problems, it could be necessary to reset the instrument by providing this very configuration.


It is recommended to create a new configuration starting from the basic one or from one of the available models. In the first case, proceed as follows:

- Start the 3DOM program from the LSI LASTEM program list;
- Select your instrument serial number in the *Instruments* panel;
- Select the name of the basic configuration in the *Configurations* panel (*user000* by default);
- Press the selected name with the right key of your mouse and choose *Save as New Configuration...*;
- Give a name to the configuration and press *OK*.

In the second, on the contrary:

- Start the 3DOM program from the LSI LASTEM program list;
- Select your instrument serial number in the *Instruments* panel;
- Select *New...* from the *Configuration* menu;
- Select the desired configuration model and press *OK*;
- Give a name to the configuration and press *OK*.

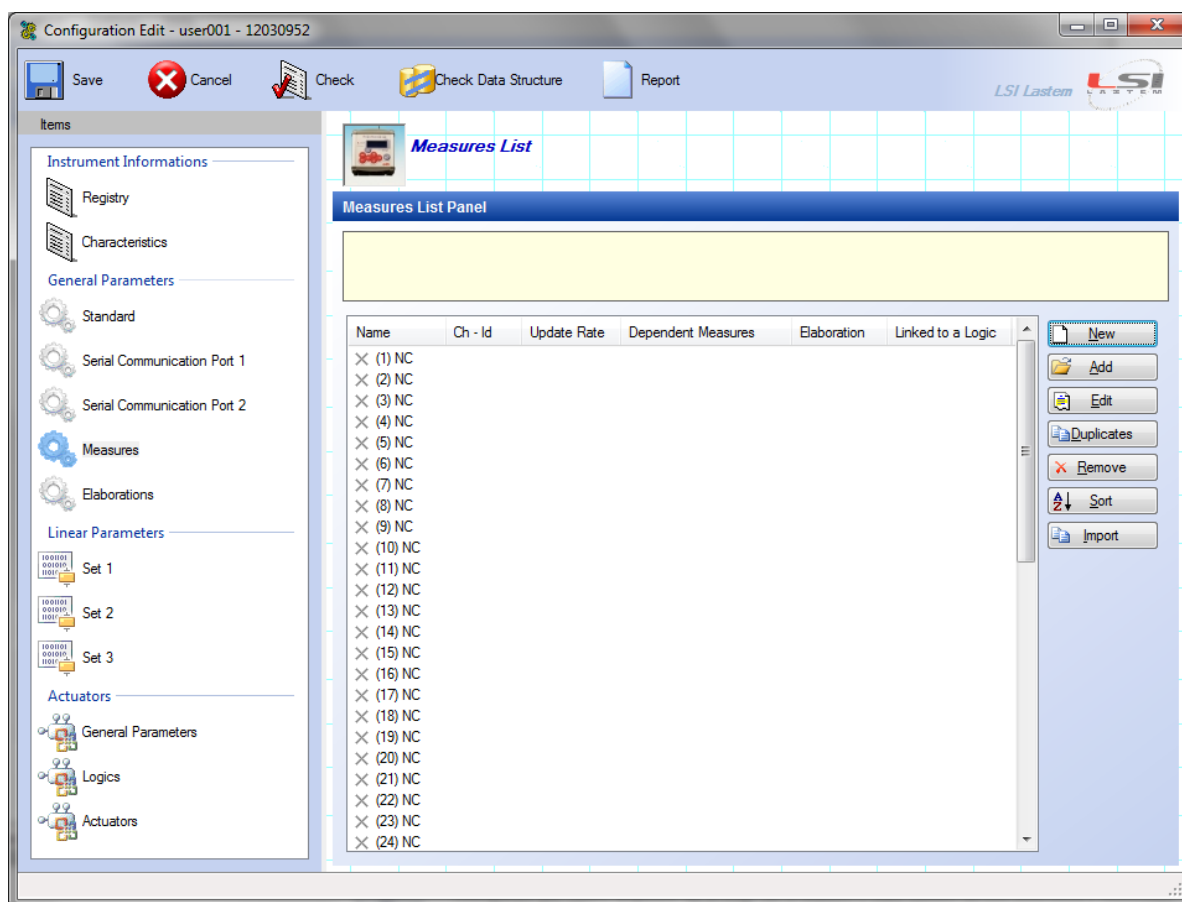
Once the operation completed, the name of the new configuration will appear in the *Configurations* panel.

For each instrument, more configurations can be created. The current configuration, indicated in the configurations panel by the icon , is the last one sent to the instrument.

ENTERING SENSORS MEASURES

The *auto-recognition of the connected probes* function (available only for ELR515 and ELR516 models) provides to configure the instrument with the measures of the probes connected to its inputs. It should not be necessary to configure other measures unless they are derived measures or serial sensors.

Select the item *Measures* from the section *General Parameters* to display the panel containing the measures management parameters.


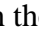



3DOM contains a registry of LSI LASTEM sensors where each sensor is suitably configured to be acquired by R-Log. If the sensor was provided by LSI LASTEM, simply press the *Add* button, carry out the sensor research by setting the sensor commercial code or by searching it in its category and press the *OK* button. The program automatically determines the most suitable input channel (selecting it among the available ones) and enters the measures in the *Measures List Panel*.

On the contrary, if the sensor is not LSI LASTEM or doesn't appear in the 3DOM sensors registry, or you want to connect it to the datalogger in *single ended* mode (in this case refer to the instrument user manual), press the *New* button to add a measure, entering all the parameters requested by the program (name, measure unit, elaborations etc.). For more details on the addition of new measures, refer to the program manual and to the on-line guide that generally appears during the change of each programmable parameter.

These operations should be repeated for each sensor that is to be acquired by the instrument.

Once the measures addition phase completed, the *Measures List Panel* shows the list of all the configured measures. For each measure, the list shows position, name, channel, acquisition rate, associated elaboration types. According to the type of measurement, a different icon is displayed:

- Acquired sensor: ;
- Serial sensor:  both the channel and the network address are displayed (protocol ID);
- Calculated measure: .

Besides, if a measure is used by a derived quantity, the icon changes: , , .

The measures order can be changed according to your requirements by pressing the *Sort* button. It is however advisable to keep coupled the quantities that need to be acquired together (for ex.: wind speed and direction) and give priority to the measures with a fast acquisition rate, moving them on top of the list.

SETTING THE ELABORATION RATE

The elaboration rate is 10 minutes by default. If you wish to change this parameter, select *Elaborations* from the *General Parameters* section.

SETTING THE ACTUATION LOGIC

The instrument has 2 actuators that can be used for the power supply of the sensors connected to the terminal board. Actuators can be also used by programmable actuation logics, able to generate alarms in relation to the values acquired by sensors. The voltage available on these terminals depends on the power supply provided by the instrument. The association between input and actuator is fixed and follows the table shown in §3.4.

To set an actuation logic, proceed as follows:

- Select *Logics* from the *Actuators* section;
- Select the first available position (for example (1)) and press *New*;
- Select the type of logic from the *Value* column, set the requested parameters and press *OK*;
- Select *Actuators* from the *Actuators* section;
- Select the actuator number for association with the logic (for example (7)) and press the *New* key;
- Enter a check mark in correspondence to the previously entered logic and press *OK*.

SETTING THE OPERATING CHARACTERISTICS

The most significant operating characteristic is the possibility to turn off your display after about one minute of non-use so as to reduce energy consumption. It is recommended to enable this option when the instrument operates with a battery, with or without PV panels.

Proceed as follows to access the operating characteristics and - in particular - to set the display auto shut-off function:

- Select *Characteristics* from the *Instrument Information* section;
- Select *Display auto power off* and set *Value* to *Yes*.


SETTING RADIO COMMUNICATION PARAMETERS

To access radio communication parameters, proceed as follows:

- select *Serial Communication Port 2* in *General Parameters* section;
- select *Instrument Network Address* and enter an unequivocal value higher than 10, since lower values have already been assigned to Master and S-Log devices;
- select *Instantaneous values automatic transmission rate* and enter a value (which meets the application requirements) other than zero and isn't at any rate higher than the update rate of the fastest measurement.

In case one or more radio network instruments are positioned in the near field and could interfere with the one being implemented, it is advisable to check that each of them is operating on different PANs. Parameters to be changed are *ZigBee network number* and *ZigBee custom network number (PAN)*.

IMPORTING MEASUREMENTS OF ANY SLAVE/REPEATER DEVICE

Measurements acquired by Slave/Repeater devices and transmitted via radio to the Master instrument must be entered in the latter as serial measurements . To do so, proceed as follows:

- Select *Measures* in the *General Parameters* section;
- Press *Import* button to start the import guided procedure;
- Press *Ok* to confirm the measurement sort mode;
- Sort measurement at will and press *Ok*;
- Select the Slave/Repeater device from which you wish to import measurements and press *Forward*;
- Select the configuration containing the measurements to be imported and press *Forward*;
- Press the *End* button to stop the operation.

Refer to the datalogger manual for more details on the customization of serial measurements.

SAVING THE CONFIGURATION AND TRANSFERRING IT TO DATALOGGER

To save the newly-created configuration, press the *Save* key from 3DOM instrument bar.

To transfer the configuration to your datalogger, proceed as follows:

- Select the name of the new configuration in the *Configurations* panel;
- Press the selected name with the right key of your mouse and choose *Upload...*

At the end of transmission, the instrument will restart with a new acquisition and will consequently operate based on the freshly transmitted settings.

3.3. Creating a configuration report

The *Configuration Report* contains all information concerning the configuration under consideration including indications on how to connect the different probes to the instrument terminals:

- Open the configuration under consideration;
- Press the *Report* key on the Instrument bar;
- Press *OK* on *Measures Order*;
- Assign a name to the file by setting the save path.

If some measures have no connection assigned, a possible cause could be that the measure was created without using the LSI LASTEM sensors registry.

It is recommended to print the document in order to be able to use it later when connecting the probes to the datalogger.

3.4. Connecting the probes

It is recommended to connect the probes with the instrument turned off.

3.4.1. Electrical connection

For ELR516M and ELR515 models.

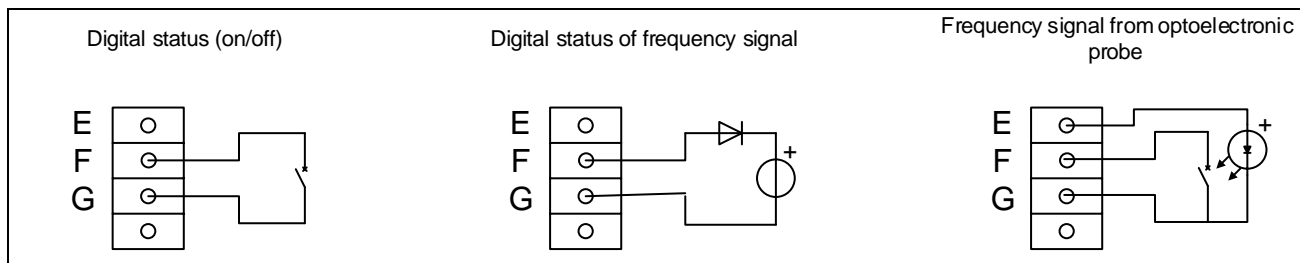
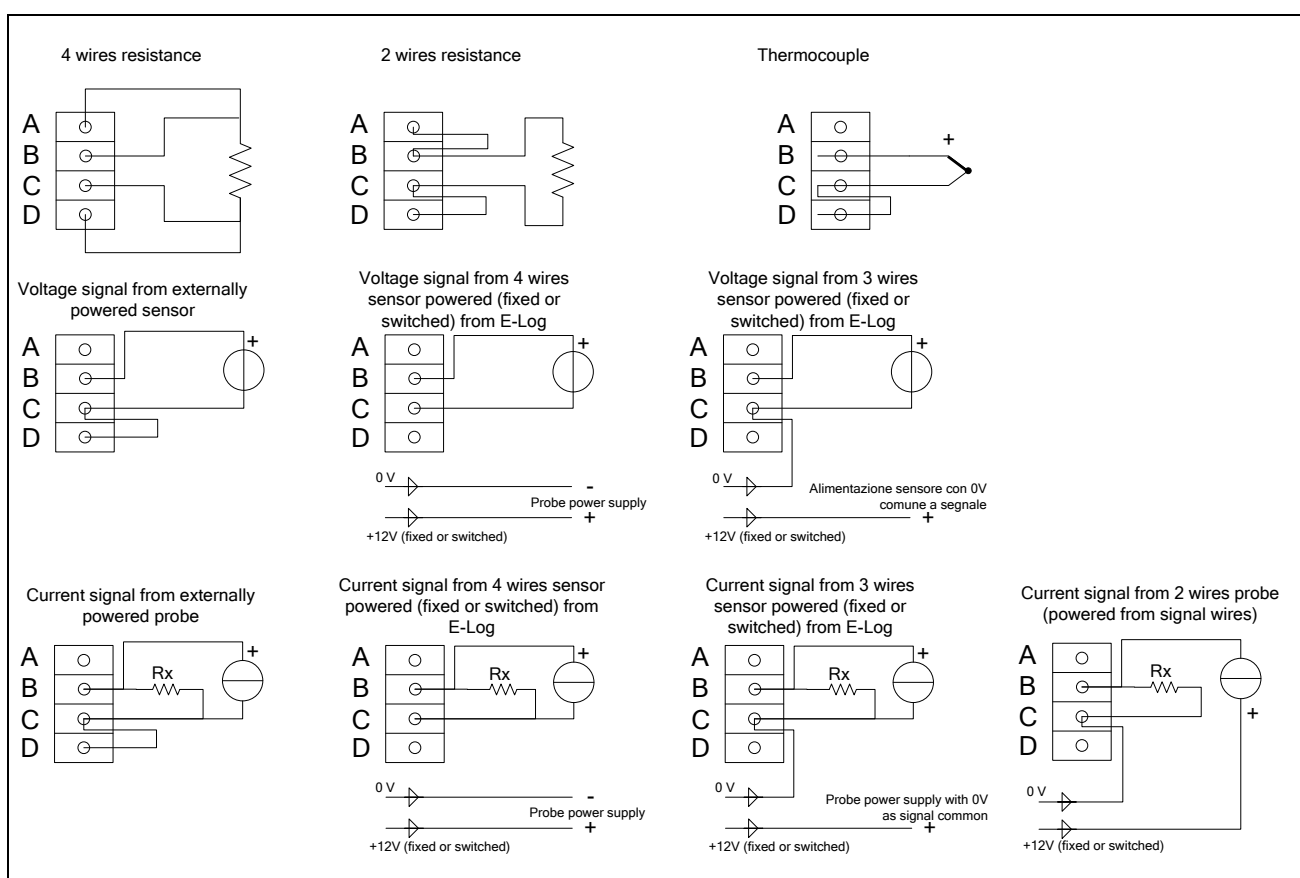
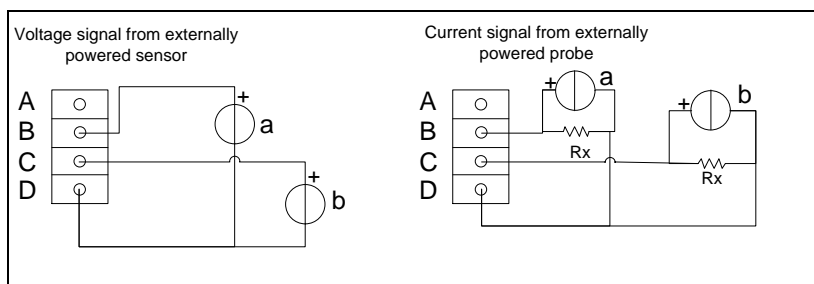
The probes should be connected to the datalogger inputs that were assigned with 3DOM. For this reason, connect the probe to the terminal box as follows:

- Identify the terminals to be used with the probe under consideration in the *Configuration Report*;
- Check for the congruence of the colors indicated in the *Configuration Report* with those reported in the probe accompanying design; in case of discordances, refer to the probe accompanying design.

Failing information, refer to the tables and schemes below.

TERMINAL BOARD								
Analogue input	Signal				GND	Actuator		
	A	B	C	D		Number	+V	0 V
1	1	2	3	4	7	1	5	6
2	17	18	19	20				
3	8	9	10	11	23	2	21	22
4	24	25	26	27				







Digital input	Signal			GND
	E	F	G	
5	12	13	14	15 or 16


Sensors with digital signal

Sensors with analog signal (differential mode)

Sensors with analog signal (single ended mode)

NOTE The voltage drop resistance indicated by Rx is used to report a voltage signal from the sensor-generated current. 3DOM program provides a list of settings for LSI LASTEM sensors, including some models with current output; for these models, always use voltage drop resistances of 50 Ω to obtain voltage signals up to 1 V.

3.5. Displaying measures in fast acquisition mode

R-Log has a function that allows to acquire all sensors connected to its inputs (excluding the sensors connected to the serial port) at maximum speed. In this way, it is possible to check for the correctness of the operations performed until that moment. To activate the fast acquisition mode, proceed as follows:

- Turn the instrument on by simultaneously pressing  and  buttons;
- Press simultaneously  and  buttons in the instant values display window;
- Check, when possible, for the correctness and the consistency of the displayed values;
- Press simultaneously  and  buttons to go back to normal mode.

A consistent amount of power is needed to display measurements in fast mode; if the instrument is power supplied by a battery, it is advisable to go back to normal mode as soon as possible.

3.6. Starting the system and displaying measurements

For a correct system startup, it is recommended to turn all instruments off and turn them on again starting preferably from the Master following with Repeaters and Slave devices. Wait as long as necessary for Repeaters and Slave devices to transmit measurements and for the Master to acquire them.

4. Elaborated data storage options

To download data from the instrument memory with *3DOM*, you need to configure data storage modes, accessible in *Options->Data Storage Configuration...* or the *Data Storage* button in the instrument bar or the instrument *Data Storage...* contextual menu. There are many possibilities; indication will be given in this manual about how to set the two most commonly used storage modes, that are:

- ✓ Storage as an ASCII text file;
- ✓ Storage on Gidas database (SQL).

4.1. Storing data in a text file

Select *Check to activate data storage* control box and set the desired storage modes (storage folder path, file name, decimal separator, number of decimal digits...).

The created files are included in the selected folder and take a variable name based on the selected settings:

[Basic folder]\[Serial number]\[Prefix]_[Serial number]_[yyyyMMdd_HH:mm:ss].txt

Note

If the setting “Append data on the same file” is not selected, each time instrument data are downloaded, a new data file is created.

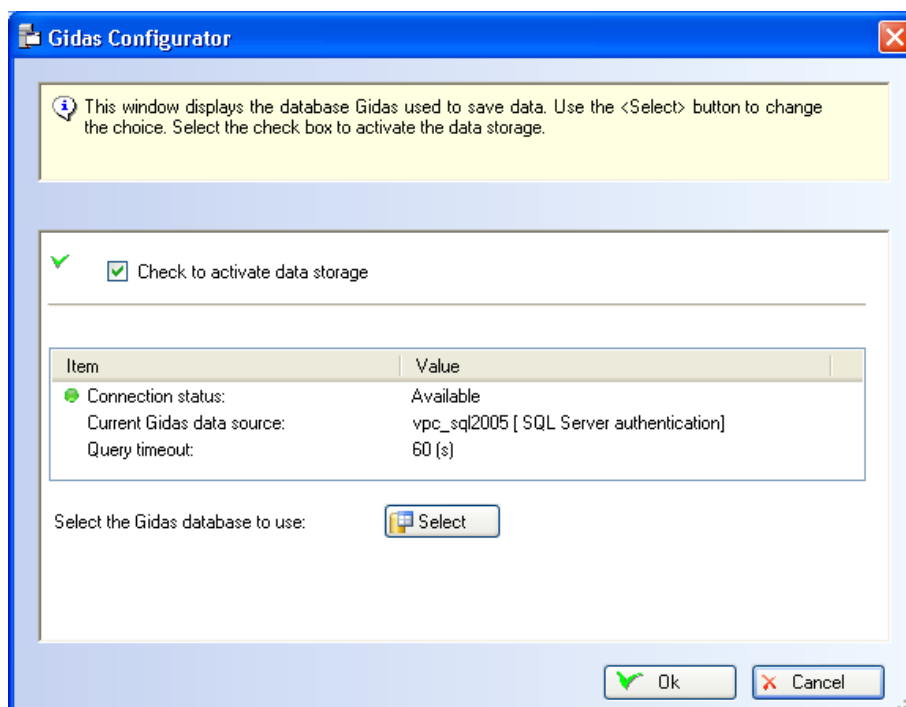
The date used to indicate the storage file corresponds to the date of creation of the storage file and NOT to the date/time of the first processed data available in the file.

4.2. Saving data on a Gidas database

Note

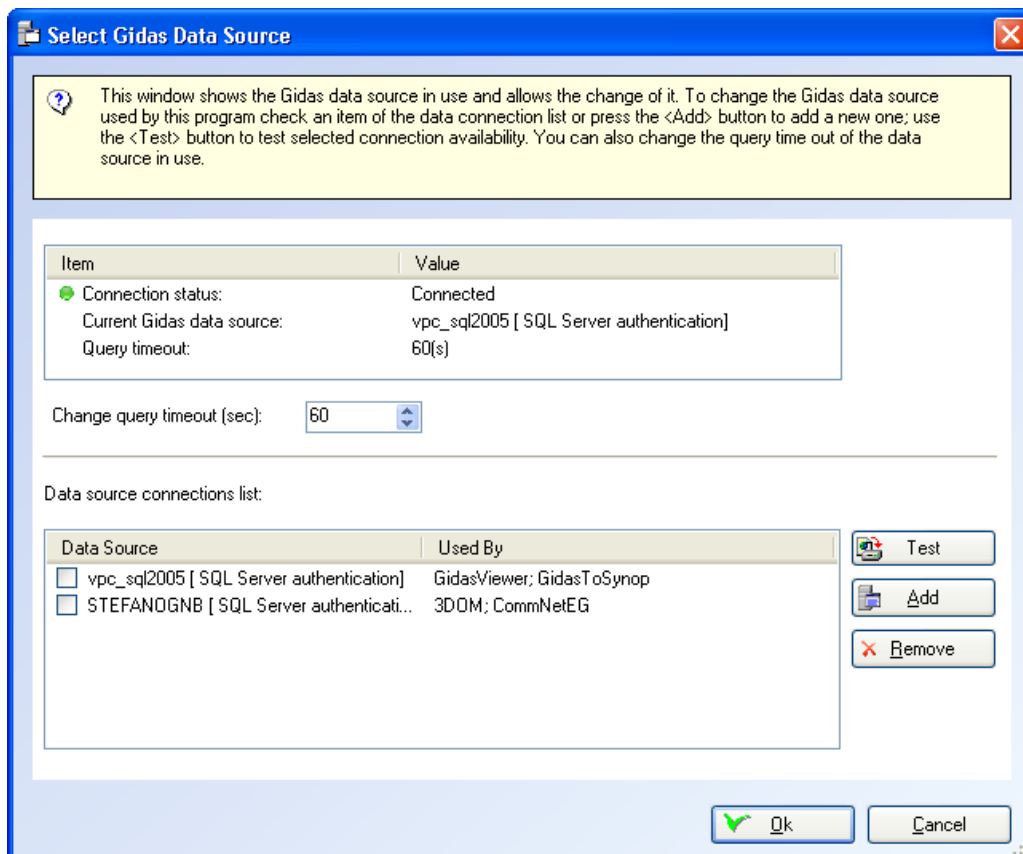
To store data on LSI LASTEM Gidas database for SQL Server 2005, you need to install the GidasViewer program: it provides for the installation of the database and requests the activation license for each instrument. Gidas database needs a SQL Server 2005 installed in the PC: if the user hasn't got this program installed, the free “Express” version can be downloaded. Refer to GidasViewer program manual for additional details on GidasViewer installation.

The configuration window for storage on Gidas database has the aspect below:



To enable storage, select *Check to activate data storage* control box.

The list shows the current connection status. This can be changed by pressing the *Select* key that opens the configuration window for connection to Gidas database:



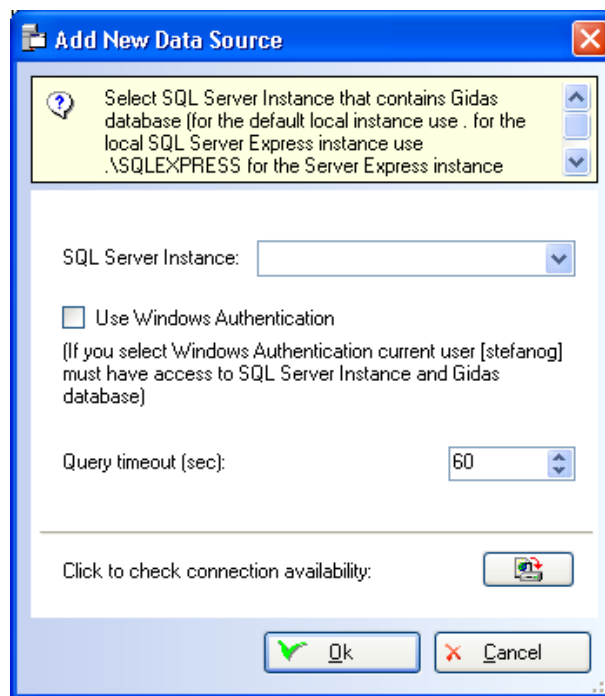
This window displays the Gidas data source in use and allows its change. To change the data source used by the program, select an item from the list of the available data sources or add a new one by pressing *Add*; use the *Test* key to check for the availability of the selected data source.


The list of the available data sources includes the list of all data sources entered by the user, it is therefore initially blank. The list shows also the data source used by the different *LSI-Lastem* programs making use of Gidas database. Obviously, only the information concerning the installed and configured programs is displayed.

The *Remove* key eliminates a data source from the list; ***this operation does NOT change the configuration of the programs that use the removed data source and that will continue to use it.***

The timeout for data requests from the database can also be changed.

To add a new connection, select the *Add* key of the previous window, that opens the Add window for a new data source.



Specify the SQL Server 2005 instance where to connect and check connection with  button. The list only shows the instances in the local computer. SQL Server instances are identified as follows:

servername\instance name

where *servername* represents the network name of the computer where SQL Server is installed; for local instances, either the computer name, the name (*local*) or the simple dot character can be used.

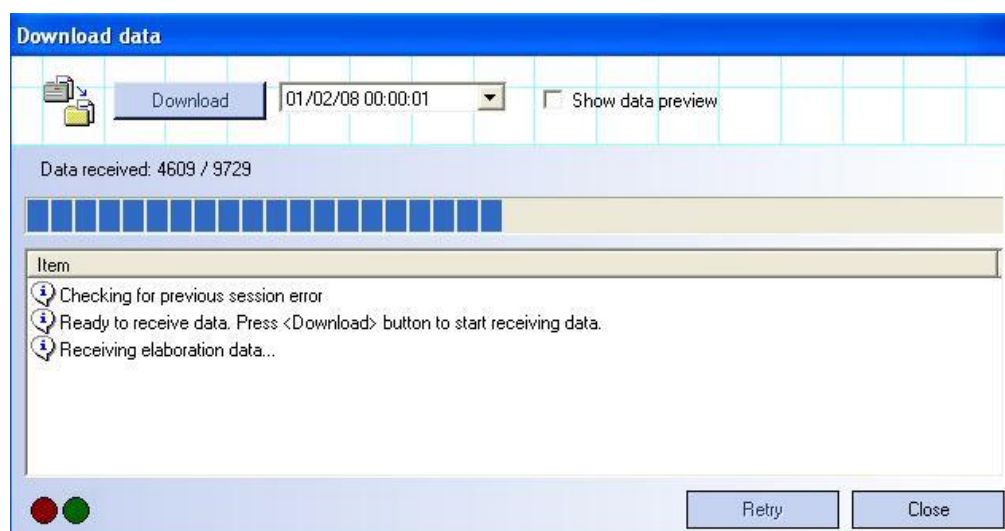
In this window, the timeout for the database data request can be set as well.

Note

Use Windows authentication only in the event the connection check fails. If you connect to a network instance and Windows authentication fails, contact your database administrator.

5. Receiving elaborated data

To receive the elaborated data from 3DOM, select the *Communication-> Elaborated Data...* menu or press the *Elab. Values* button on the instrument bar of *Instrument* or the *Elaborated Data...* contextual menu of the instrument.

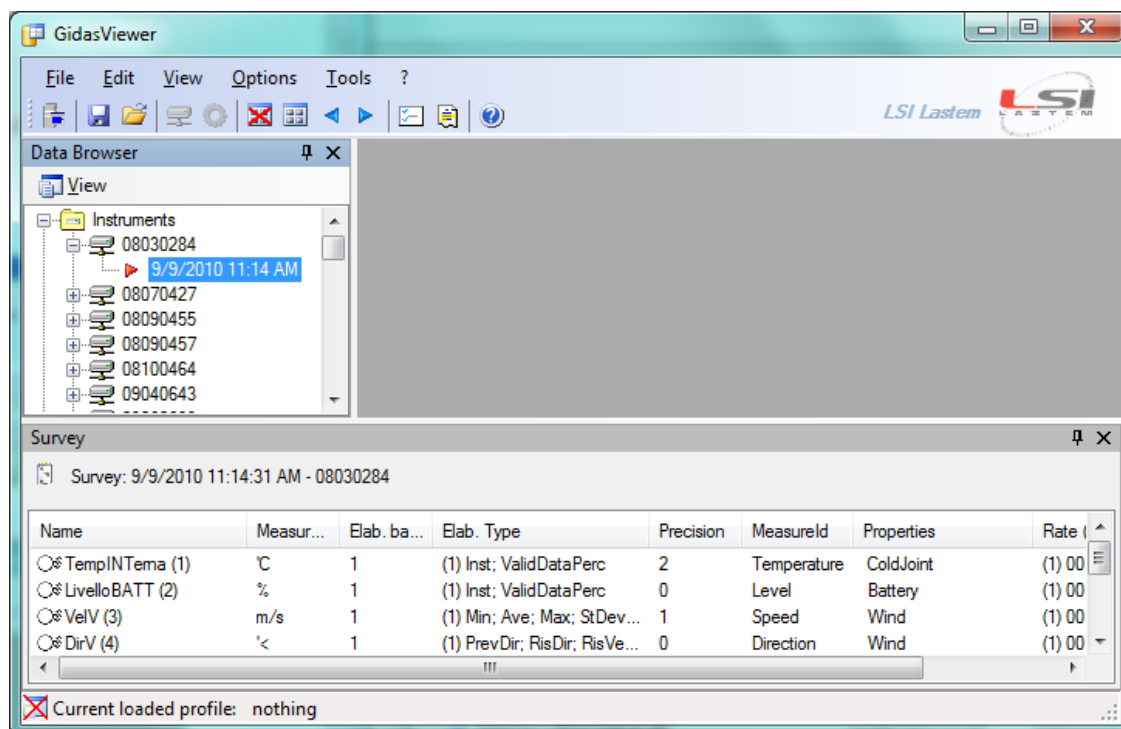


If the program succeeds in establishing a communication with the selected instrument, the *Download* button is enabled; proceed then as follows:

- Select the date from which to start downloading data; in case some data were already been downloaded, the control proposes the date of the last download;
- Select the *Show data preview* box if you want to display data before saving them;
- Press the *Download* button to download data and save them in the selected archive files.

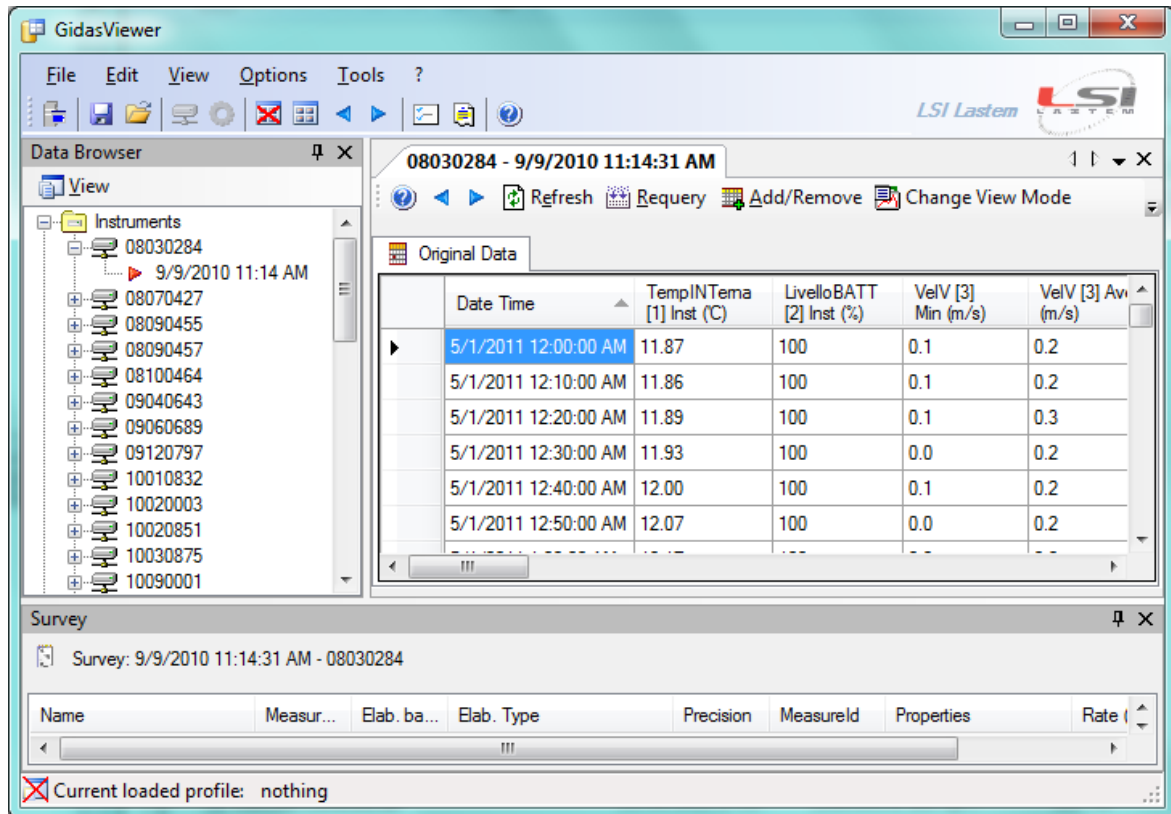
6. Displaying elaborated data

The elaborated data filed in Gidas database can be displayed with *Gidas Viewer* software. At startup, the program has the following aspect:



To display data, proceed as follows:

- Expand the branch corresponding to the instrument serial number that appears in the *Data Browser*;
- Select the identified acquisition with the starting date/time of measurements;
- Press the selected acquisition with the right key of your mouse and choose *Show Data* (for the wind direction measurement, select *Show Wind Rose Data* or *Show Weibull Wind Rose Distribution*);
- Set the elements for data research and press *OK*; the program will display data in table format as shown below;



- To display the chart select *Show Chart* on the table with the right key of your mouse.

Enjoy your R-Log



Thank you for reading this data sheet.

For pricing or for further information, please contact us at our UK Office, using the details below.



UK Office

Keison Products,

P.O. Box 2124, Chelmsford, Essex, CM1 3UP, England.

Tel: +44 (0)330 088 0560

Fax: +44 (0)1245 808399

Email: sales@keison.co.uk

Please note - Product designs and specifications are subject to change without notice. The user is responsible for determining the suitability of this product.