

# TitroLine® 7500 KF and TitroLine® 7500 KF *trace* -

You can't go wrong with the new TitroLine® KF titrators from SI Analytics

The TitroLine® 7500 KF is the volumetric generalist for a wide range of use and the TitroLine® 7500 KF *trace* is the specialist for low water contents. Both new titrators are to be characterized by following features:

- ▶ Fast, easy and precise
- ▶ With standard methods for different applications (titer, blank value, 1 or 2 component reagent)
- ▶ The addition of solvent and the extraction of the titrated sample are managed by the titration stand TM 235 KF (optional for TitroLine® 7500 KF *trace*)
- ▶ Online display of curve and measurement drift during titration

Advantages  
TitroLine® /TITRONIC®

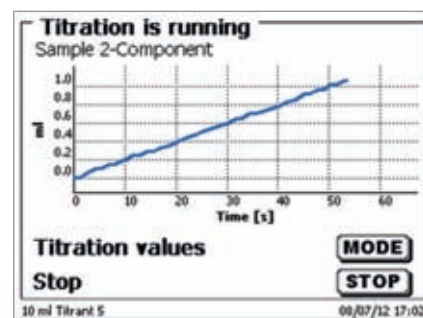


TitroLine® 7500 KF *trace*

# Karl Fischer Titration made easy

## Titration curve live

The online display of the measurement curve, measurement drift and titration solvent consumption (TitroLine® 7500 KF only) make accurate monitoring of the titration possible and one can determine any unwanted side reactions immediately.



TitroLine® 7500 KF

# Accessories

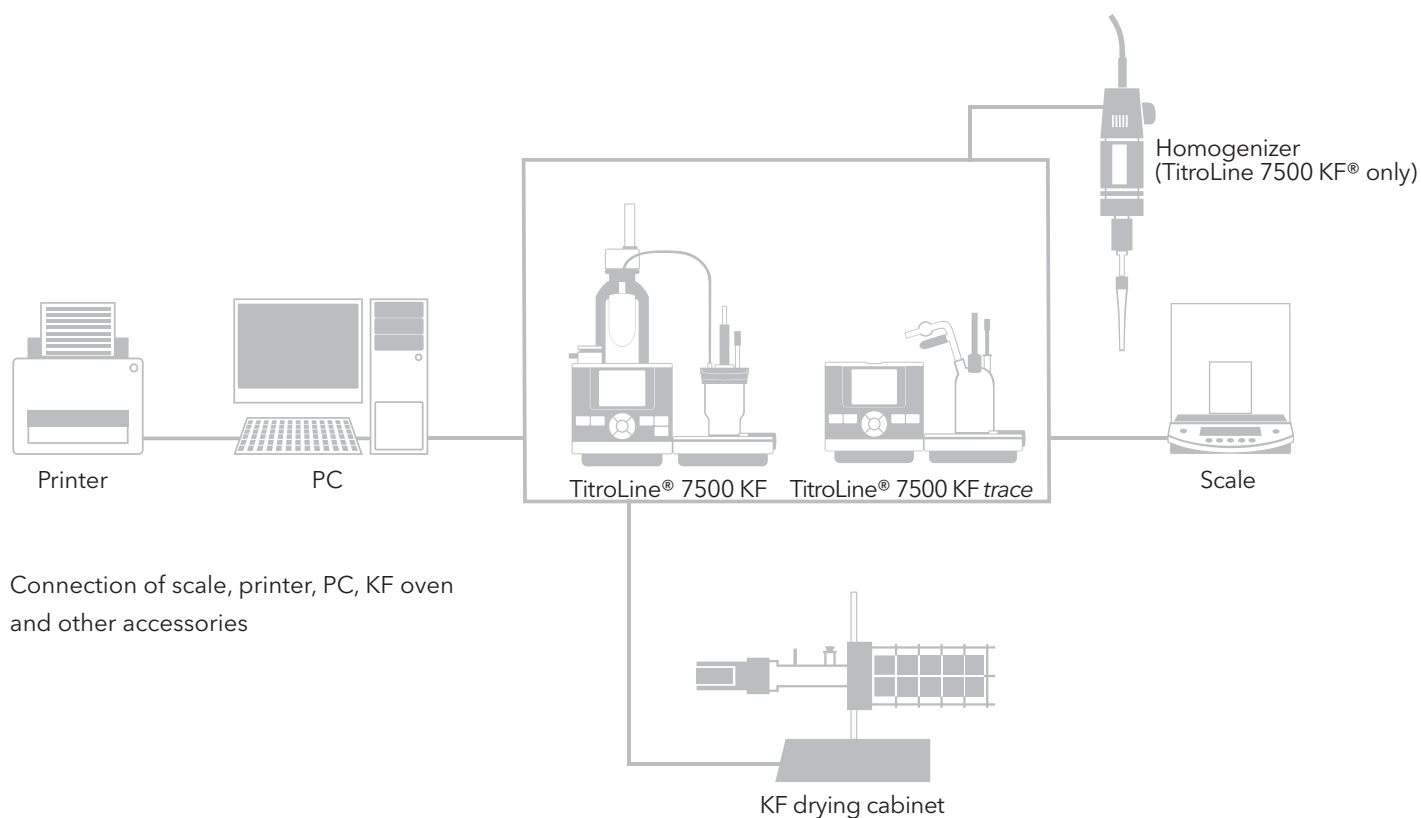
## Titration stand TM 235 KF

Titrated samples are simply extracted by pressing a button on the KF titration stand TM 235 (standard on TitroLine® 7500 and KF and part of the modules 2 + 4 TitroLine® 7500 KF trace). With another push on a button you add fresh solvent or anolyte. A built-in magnetic stirrer ensures a consistent dilution of solution and sample.

The titration vessels are sealed to thus avoid the ingress of moisture (low drift!). The removable glass vessel on the TitroLine® 7500 KF comes in two sizes and is easy to clean. It is also available as thermostatable version.

For the TitroLine® 7500 KF trace you have the choice of two different vessels made of solid glass with three and five openings. They have a very low drift.





## Specifications –TitroLine® 7500 KF and TitroLine® 7500 KF *trace*

Specific Features	TitroLine® 7500 KF	TitroLine® 7500 KF <i>trace</i>
Measuring range	10 ppm – 100%	1 ppm – 5% (10 µg – 200 mg)
Accuracy	Dosing accuracy < 0.15%	< 0.3% at 1 mg water
Applications	KF volumetry, Dead- stop-titrations (SO <sub>2</sub> , bromine number ...)	KF coulometry, bromine number
Titration stand with integrated pump and magnetic stirrer TM 235 KF	<input checked="" type="checkbox"/>	Module 2 and 4
You will find more general features on page 146/147		





Thank you for reading this data sheet.

For pricing or for further information, please contact us at our UK Office, using the details below.



**UK Office**

**Keison Products,**

**P.O. Box 2124, Chelmsford, Essex, CM1 3UP, England.**

**Tel: +44 (0)330 088 0560**

**Fax: +44 (0)1245 808399**

**Email: [sales@keison.co.uk](mailto:sales@keison.co.uk)**

Please note - Product designs and specifications are subject to change without notice. The user is responsible for determining the suitability of this product.