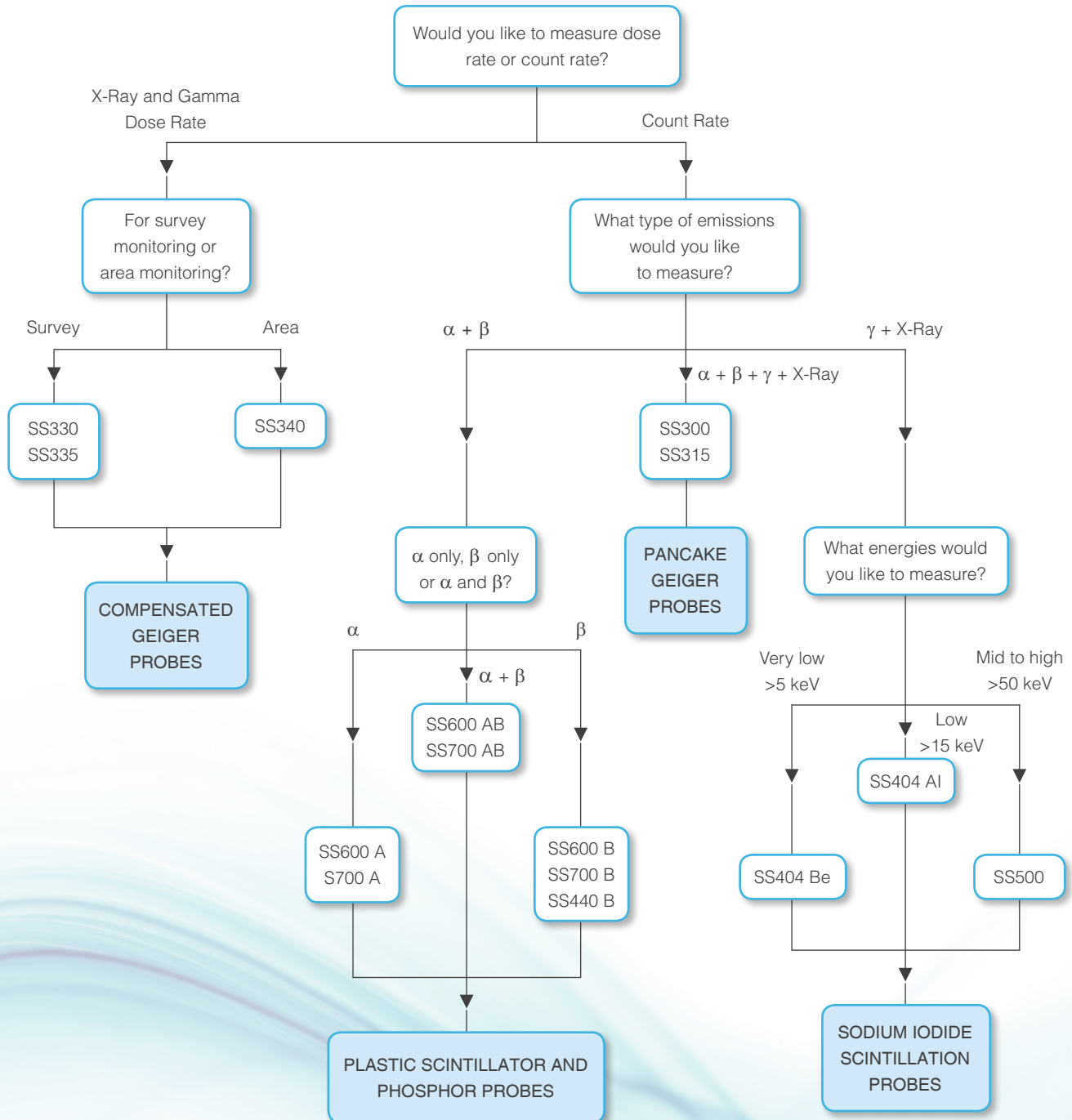


Probe Selection Guide

For Radhound Monitors

If you are unsure of which is the most suitable probe for your application, please use this chart to help guide your selection.



Specifications

Detector crystal [*]	32 mm x 2.5 mm NaI
Energy response [*]	1.5 keV to 250 keV for SS404 Al 5 keV to 250 keV for SS404 Be
Sensitivity [*]	3.8 cps per Bq/cm ² for ¹²⁵ I 1.6 cps per Bq/cm ² for ^{99m} Tc 1.4 cps per Bq/cm ² for ⁵⁷ Co
Unit Dimensions	380 x 300 x 155 mm
Temperature range	-10°C to + 50°C
Weight	Empty: 8.8 kg Complete: 14.1 kg

^{*}Specifications using SS404 Al probe. Full range of alternative detectors available.



Thank you for reading this data sheet.

For pricing or for further information, please contact us at our UK Office, using the details below.



UK Office

Keison Products,

P.O. Box 2124, Chelmsford, Essex, CM1 3UP, England.

Tel: +44 (0)330 088 0560

Fax: +44 (0)1245 808399

Email: sales@keison.co.uk

Please note - Product designs and specifications are subject to change without notice. The user is responsible for determining the suitability of this product.