

Source container



Overview

Page 228

VEGASOURCE

Page 230

Radiation capsule

Page 234

Mounting bracket

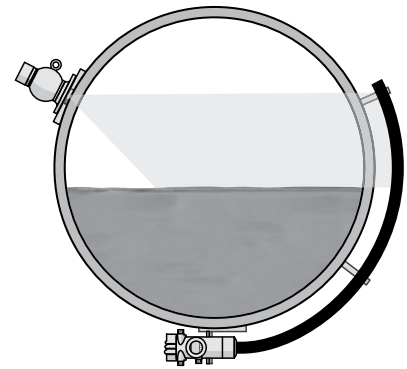
Page 235

VEGASOURCE



Source container for the radiation capsule

Measuring principle

The source container consists of a cast housing filled with lead. It shields the environment against gamma rays and protects also the radioactive capsule against mechanical damage or environmental influences. Through a narrow slot, the radiation can be focussed in the direction of the detector. This opening can be locked completely, either manually or pneumatically. For installation, the screening vessel can be mounted on a flange.



Overview

Instrument type	Version	Source activity	Process fitting
VEGASOURCE 31 	Source container with locking facility	up to 22.5 GBq / 600 mCi Cs-137	Flange DN 100 PN 16
VEGASOURCE 35 	Source container with locking facility	up to 74 GBq / 2000 mCi Cs-137	Flange DN 100 PN 16

Radiation capsule

Metallic cobalt / Caesium ceramic pellet



Application area

Radioactive, gamma rays emitted in isotopes are used as source for level, switching, density and mass flow measurement. Since in the radiation-based measurement technique only the radiation in direction of the sensor is required, a respective focussing in the source container VEGASOURCE is required.

Your benefit

- Double encapsulated Cobalt-60 / Caesium-137 isotopes
- Maximum protection with temperature, pressure, shock and vibration according to radiation classification ANSI/ISO C.66646
- Simple handling and installation in the source container

Technical data

Version: double encapsulated gamma source
 Isotopes: Co-60 / Cs-137
 Classification: C.66646 according to ISO 2919 or DIN 25426
 Series: with nipple and M4 thread for fastening

Radiation source activity

1AC	18.5 MBq / 0.5 mCi (Cs-137)
1AD	37 MBq / 1 mCi (Cs-137)
1AE	74 MBq / 2 mCi (Cs-137)
1AF	110 MBq / 3 mCi (Cs-137)
1AG	185 MBq / 5 mCi (Cs-137)
1AH	370 MBq / 10 mCi (Cs-137)
1AI	550 MBq / 15 mCi (Cs-137)
1AK	740 MBq / 20 mCi (Cs-137)
1AL	1.1 GBq / 30 mCi (Cs-137)
1AM	1.85 GBq / 50 mCi (Cs-137)
1BM	2.8 GBq / 75 mCi (Cs-137)
1AN	3.7 GBq / 100 mCi (Cs-137)
1AO	5.5 GBq / 150 mCi (Cs-137)
1AP	7.4 GBq / 200 mCi (Cs-137)
1AQ	9.25GBq / 250 mCi (Cs-137)
1AR	11 GBq / 300 mCi (Cs-137)
1AS	15 GBq / 400 mCi (Cs-137)
1AT	18.5 GBq / 500 mCi (Cs-137)
1AU	22.5 GBq / 600 mCi (Cs-137)
1AV	25.9 GBq / 700 mCi (Cs-137)
1AW	29.6 GBq / 800 mCi (Cs-137)
1BB	37 GBq / 1000 mCi (Cs-137)
1BC	55.5 GBq / 1500 mCi (Cs-137)
1BD	74 GBq / 2000 mCi (Cs-137)
2AD	37 MBq / 1 mCi (Co-60)
2AE	74 MBq / 2 mCi (Co-60)
2AF	110 MBq / 3 mCi (Co-60)
2AG	185 MBq / 5 mCi (Co-60)
2AH	370 MBq / 10 mCi (Co-60)
2AK	740 MBq / 20 mCi (Co-60)
2AL	1.1 GBq / 30 mCi (Co-60)
2AM	1.85 GBq / 50 mCi (Co-60)
2AN	3.7 GBq / 100 mCi (Co-60)
2AP	7.4 GBq / 200 mCi (Co-60)

Series

A1	Nipple d=6.4 x 17.6 mm, capsule VZ-79-001 (Cs-137)
B1	Thread M4 d=6.4 x 17.6 mm, capsule VZ-1508-001 (Cs-137)
C1	Nipple d=8 x 19 mm, capsule VZ-357-002 (Cs-137)
D1	Thread M4, d=8 x 19 mm, capsule VZ-3579-001 (Cs-137)
F1	Cylinder d=8.05 x 12.3 mm, capsule X.9 (Cs-137)



Mounting bracket KV 31

Mounting bracket for pipes with 50 - 620 mm diameter

The robust mounting bracket of 316L is used for simple pipe mounting of MINITRAC and source container. For applications with small tube diameters, it is possible to extend the measurement displacement through a 30° mounting of the sensor and source container. The required fixing material is included to the shipment.



Pipe diameter / Material

- A 50 - 220 mm / 316L
- B 50 - 100 mm / 316L (30 degrees diagonal radiation)
- C 200 - 420 mm / 316L

Mounting arrangement

- 1 Horizontal sensor mounting (axial radiation)
- 2 Vertical sensor mounting (radial radiation)
- 3 30 deg diagonal radiation (vertical)

Equipment

- X Standard; with bracket for VEGASOURCE 31
- C Collimator for sensor
- D Collimator for VEGASOURCE
- E Collimator for sensor and VEGASOURCE

Cooling option

- X without

KV31.



Thank you for reading this data sheet.

For pricing or for further information, please contact us at our UK Office, using the details below.



UK Office

Keison Products,

P.O. Box 2124, Chelmsford, Essex, CM1 3UP, England.

Tel: +44 (0)330 088 0560

Fax: +44 (0)1245 808399

Email: sales@keison.co.uk

Please note - Product designs and specifications are subject to change without notice. The user is responsible for determining the suitability of this product.