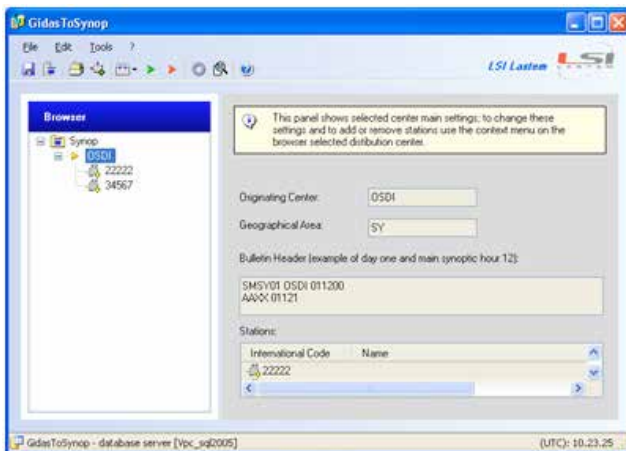


► GidasSynop (BSZ425)

Creation of SYNOP codes bulletins starting from the measurements made by E-Log data acquisition units and stored inside the SQL Server Gidas data base. Bulletins refers to one or more stations are generated in ASCII file. Bulletins coding is according to: Manual on Codes - International Codes VOLUME I.1 (Annex II to WMO Technical Regulations) 1995 edition WMO-No. 306 Secretariat of the World Meteorological Organization – Geneva – Switzerland 1995 Part A — Alphanumeric Codes. Quantities from the database used by the GidasSynop program are the following:

- Wind speed and wind direction including standard deviation (optional);
- Air temperature;
- Barometric pressure;
- Relative Humidity;
- Rain;
- Evaporation;
- Irradiance;
- Calculation made by the program:
 - Dew point;
 - Sea level barometric pressure;
 - Geopotential altitude.



Main

- GidasSynop allows to configure distribution list of data acquisition systems in order to send SYNOP reports;
- Synop reports can be generate in automatic mode, from the measurements stored in the database, or in in manual mode where it is possible to add also manual observations.

🕒 interface - Gidas toSynop

General Settings

Use this form to set general options for the program. Bulletin will be saved on file [Bulletin path\yyyy-mm-dd_Pp_Station Code].txt

Path of stored bulletins:
C:\SW\Nun\100\T est\Bulletin

Automatic Bulletin Creation Settings:

☐ If checked automatic bulletin engine will start when program start running

☒ If checked insert the bulletin header (MMMMYYGSim)

☐ If checked insert debug informations

Minutes offset used by the scheduler to schedule bulletin (insert negative values to start before scheduled hour): 5

Select automatic bulletin scheduling: Intermediate-Synoptic Hours (00,03,06,09,12,15,18,21)

<input checked="" type="checkbox"/> 0	<input type="checkbox"/> 1	<input type="checkbox"/> 2	<input type="checkbox"/> 3	<input type="checkbox"/> 4	<input type="checkbox"/> 5	<input type="checkbox"/> 6	<input type="checkbox"/> 7	<input type="checkbox"/> 8	<input type="checkbox"/> 9	<input type="checkbox"/> 10	<input type="checkbox"/> 11
<input checked="" type="checkbox"/> 12	<input type="checkbox"/> 13	<input type="checkbox"/> 14	<input checked="" type="checkbox"/> 15	<input type="checkbox"/> 16	<input type="checkbox"/> 17	<input type="checkbox"/> 18	<input type="checkbox"/> 19	<input type="checkbox"/> 20	<input type="checkbox"/> 21	<input type="checkbox"/> 22	<input type="checkbox"/> 23

Ok Cancel

Setup

- Configuration of the automatic Synop code report.

① interface - **Bulletin setup**

Create Synop bulletin for station: 22222

Select bulletin date and time and set manual data. Enable or disable the presence of every group in the bulletin and set appropriate values. Use "/" to report blank data in the bulletin. To see automatically loaded data from database click on 'Station Configuration' tab. Press on 'Create Report' button to generate bulletin.

Bulletin date time: 30/10/2008 hour (UTC): 12 Create Bulletin

☐ If checked insert bulletin header from parent Center ☐ If checked insert debug information

Manual data Station Configuration

Mandatory Data

Total cloud cover (Code table 2700) one digit: 0

Height above the surface of the base of the lowest cloud (Code table 1600) one digit: 9

Horizontal surface visibility (Code table 4377) two digits: //

Section 111 Data

Present and past weather group (Code table 4561,4577,4680,4532) four digits: 7

Cloud type group (Code table 2700, 0513, 0515, 0509) four digits: 8

Section 333 Data

State of the sky in the tropic (Code table 0430,0700) four digits: 0

State of the ground without snow (Code table 0901) four digits: 3

State of the ground with snow or ice cover (Code table 0975, 3089) four digits: 4

Temperature change group (Code table 0822) three digits: 54

Cloud direction movement group (Code table 0700) three digits: 56

Individual cloud layer group (Code Table 2700,0500,1677) four digits: 8

Special Phenomena Group: 9

Close

Manual mode report

- Report includes measurements stored in the data base as well as manual observations.

① interface - **Bulletin for station**

Automatic Bulletin Engine

Stop Start Clear Logs Open Logs Folder

Log Last Created Bulletins

Items

2008-Oct-29 17:48:49,323 - Automatic bulletin start running...

Next bulletin will be created at (UTC):10/29/2008 6:00 PM (UTC): 16.49.24

Automatic mode report

- Programs controls all the operation made in automatic mode.

① interface - **Automatic mode report**



Thank you for reading this data sheet.

For pricing or for further information, please contact us at our UK Office, using the details below.



UK Office

Keison Products,

P.O. Box 2124, Chelmsford, Essex, CM1 3UP, England.

Tel: +44 (0)330 088 0560

Fax: +44 (0)1245 808399

Email: sales@keison.co.uk

Please note - Product designs and specifications are subject to change without notice. The user is responsible for determining the suitability of this product.