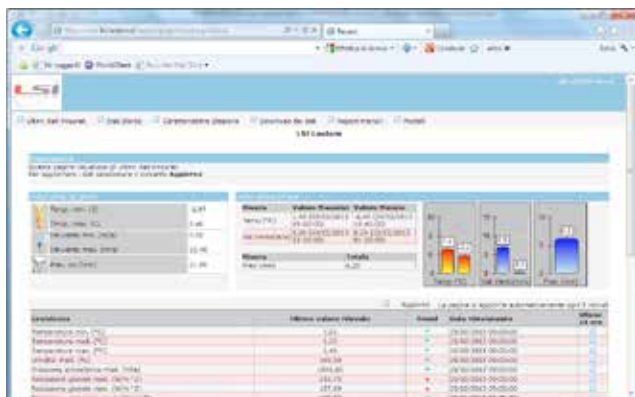


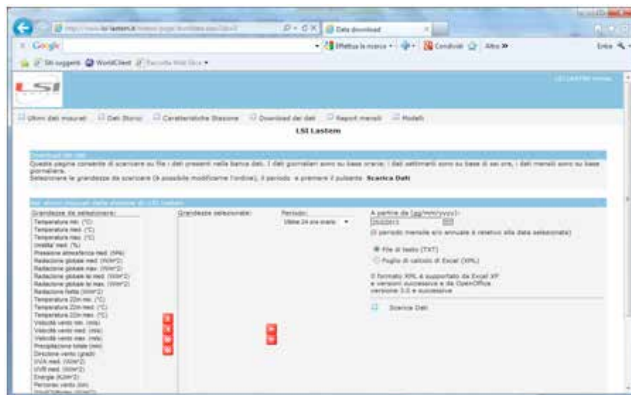
▶ LSI LASTEM Web application (DZZDAT3)

Our web solution allows the user to access data acquisition unit information from his preferred platform and from anywhere in the world. The web application as well the data communication to the application is managed by LSI LASTEM, which supplies this service under subscription. LSI LASTEM web application is only available for data acquisition systems with GPRS data communication (user should procure a SIM data and check the GPRS coverage) or TCP/IP option. It is possible to check real-time data, get daily, weekly, monthly, yearly reports or download data in open formats in a simple and effective way. The solution provides real-time data publication (10 minutes update) for any registered weather station. You can access your database, get complete reports and download them in ASCII and Excel tables any time.



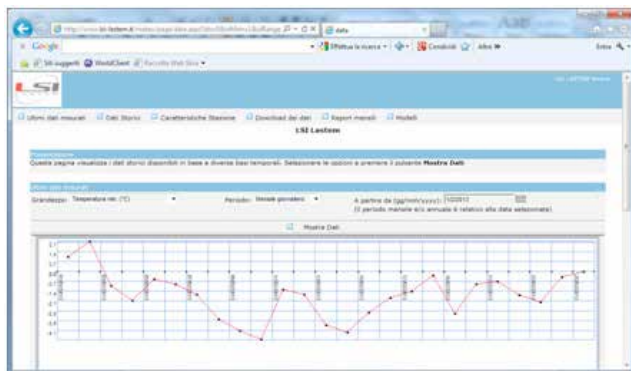
Main

- Data communication from data acquisition unit to web site by GPRS or TCP/IP. For GPRS user should sign a contract with a local telephone service provider. For TCP/IP communication weather station should be connected to an Ethernet LAN with a proper setup;
- Map including data acquisition system's information;
- Data acquisition system's information: site information (name, coordinates, altitude, etc), pictures, sensors list and features;
- Last measurement received: from the data acquisition system and quick connection to the charts and tables of the selected measurements;
- Dashboard with Max./Min values over 24 hrs and 10 days about temperature, total rain and wind speed;
- Data Reports on charts and tables.
- Wind rose along with wind distribution table (wind speed classes and wind direction sectors);
- Data downloading on TXT and XLS formats;
- Pasquill atmosphere class option when global irradiance and net radiation are available;
- Turc evapotranspiration reports when global irradiance is available;
- Possibility to protect the access by User's name and Password.



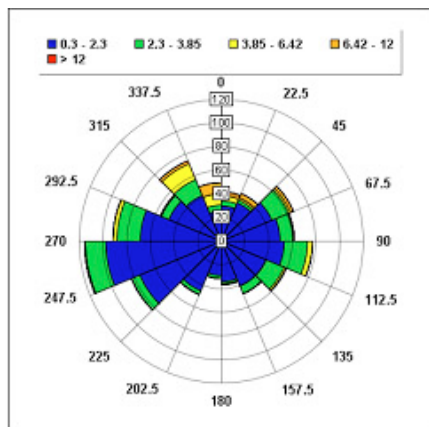
Database

- Data download from the web application database in ASCII and XLM formats using hourly, daily, monthly selection.



Data reports

- Data Reports with selected measurements: hourly, daily, monthly, reports in the form of printable tables and charts are available;
- Wind rose is available along with wind distribution table (wind speed classes and wind direction sectors).



SETTORI GRADI	V1 (< 0.3)	V2 (0.3 - 2.3)	V3 (2.3 - 3.85)
0.0 - 22.5	0.00	14.39	0.00
22.5 - 45.0	0.00	14.39	0.00
45.0 - 67.5	0.00	21.58	0.00
67.5 - 90.0	0.00	43.17	0.00
90.0 - 112.5	0.00	64.75	0.00
112.5 - 135.0	0.00	50.36	0.00
135.0 - 157.5	0.00	86.33	0.00
157.5 - 180.0	0.00	79.14	0.00
180.0 - 202.5	0.00	14.39	0.00
202.5 - 225.0	0.00	71.94	0.00
225.0 - 247.5	0.00	172.66	0.00
247.5 - 270.0	0.00	165.47	0.00
270.0 - 292.5	0.00	7.19	0.00
292.5 - 315.0	0.00	50.36	0.00
315.0 - 337.5	0.00	57.55	0.00
337.5 - 360.0	0.00	35.97	0.00
VARIABILI	0.00	0.00	0.00
CALMA DI VENTO	50.36	0.00	0.00
TOTALE	50.36	949.64	0.00



Thank you for reading this data sheet.

For pricing or for further information, please contact us at our UK Office, using the details below.



UK Office

Keison Products,

P.O. Box 2124, Chelmsford, Essex, CM1 3UP, England.

Tel: +44 (0)330 088 0560

Fax: +44 (0)1245 808399

Email: sales@keison.co.uk

Please note - Product designs and specifications are subject to change without notice. The user is responsible for determining the suitability of this product.