

**Miniature proportional
pressure control valve
G1/8 or 1/8 NPT and manifold
Nominal orifice 0,5**

Compact and flexible design

Proven low power technology

Reliable, rugged, open-loop device

Excellent performance characteristics

Low power consumption

Manifold mountable

Available in 2 and 3 wire

Technical data

Medium:

Compressed air filtered to 5 µm, oil free and dry air

Output pressure:

0 to 1 bar, 0 to 2 bar, 0 to 4 bar, 0 to 6 bar and
0 to 8 bar (or PSI equivalent)

Operating pressure:

At least 1,5 bar above maximum required output
pressure

Supply sensitivity:

Less than 0,2 bar/3 psi for 1 bar/15 psi supply
pressure change

Flow:

Up to 200 N l/min (see characteristic curves)

Air consumption:

≤ 6 bar/90 psi = < 3 N l/min typical
8 bar/120 psi = < 10 N l/min typical

Ambient temperature:

0 to +60 °C

Contact our technical service for use below +2°C

Temperature effect:

Typically less than 7 mbar

Response time:

≤ 500 ms from 0 to 100% or
≤ 100 ms from 100 to 0% of output pressure into a
10cc load

Degree of protection:

IP20

Linearity:

< 1,5% of span

Hysteresis:

< 1% of span

Vibration immunity:

< 3% output shift for ± 2 g 15-150 Hz

Weight:

0,20 kg

Materials

Body: zinc casting

Diaphragms: nitrile

Spacer: nylon

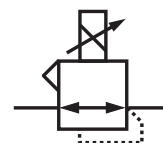


Electrical parameters

see page 2

Ordering information

see page 2



Electrical parameters

Electromagnetic compatibility	CE marked: conforms to EC requirements EN61000-6-4:2001(Emissions) and EN61000-6-2:1999(Immunity)
Electrical input signal	2-pin versions 4 to 20 mA or 1 to 10 V 3-pin versions requires 12 to 24 V d.c. supply
Electrical power input	24 V d.c. ±10%
Failure mode	Signal falls to bleed pressure when electrical supply fails
Loop resistance	mA = 220 W max., V = 16 kW min.

Options selector

VP12★★★★★0★Q00

Output pressure	Substitute
0 to 1 bar/15 psi	01
0 to 2 bar/30 psi	02
0 to 4 bar/60 psi*	04
0 to 6 bar/90 psi*	06
0 to 8 bar/120 psi*	08

Unit of pressure	Substitute
Bar	B
PSI	P

Wire options	Substitute
2	0
3 (24 V d.c. supply)	1

Control signal	Substitute
0 to 10 V	1
4 to 20 mA	4

Port size	Substitute
G1/8	G
1/8 NPT	H
Manifold optional	X

* The models with 6 and 8 bar pressure only available as 3-pin Options to special order. For options not shown and any specific requirements please contact Norgren technical department via www.norgren.com/ws

Ordering example 3 wire

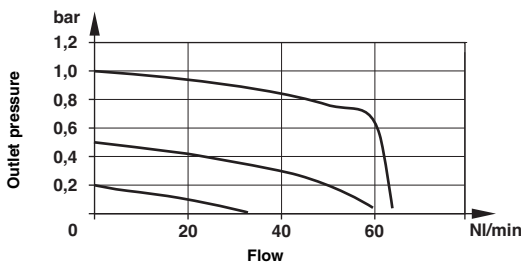
e.g. output pressure: 2 bar,
port size: G1/8, input: 4-20 mA
quote: **VP1202BG401Q00**

Ordering example 2 wire

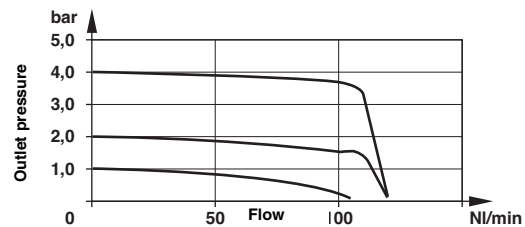
e.g. output pressure: 15 psi,
port size: 1/8" NPT, input: 4-20 mA
quote: **VP1201PH400Q00**

Characteristics curves

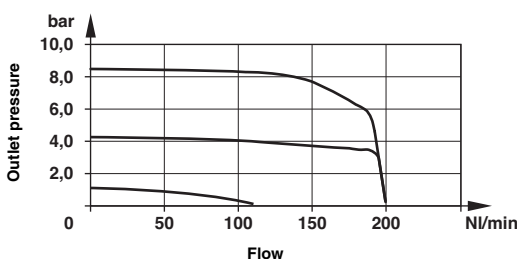
2,5 bar supply pressure



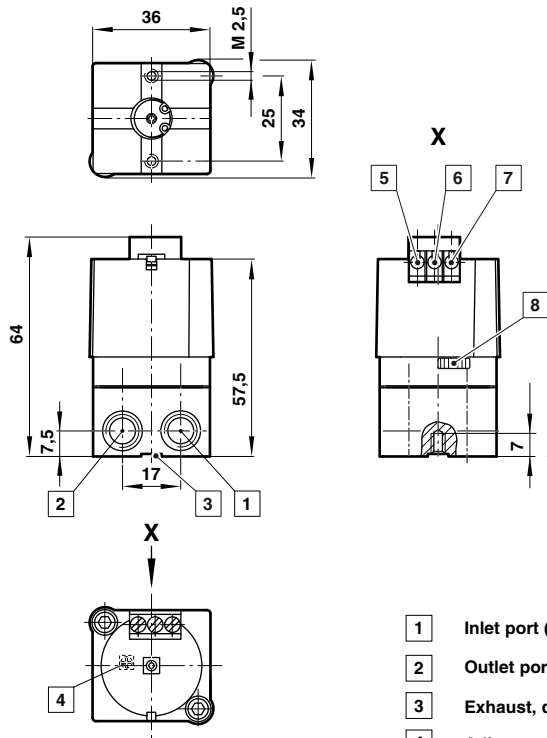
5,5 bar supply pressure



9,5 bar supply pressure



Basic dimension



- 1** Inlet port (G1/8 or 1/8 NPT)
- 2** Outlet port (G1/8 or 1/8 NPT)
- 3** Exhaust, do not obstruct
- 4** Adjust span
- 5** Power
- 6** Signal
- 7** Common
- 8** Adjust zero



Thank you for reading this data sheet.

For pricing or for further information, please contact us at our UK Office, using the details below.



UK Office

Keison Products,

P.O. Box 2124, Chelmsford, Essex, CM1 3UP, England.

Tel: +44 (0)330 088 0560

Fax: +44 (0)1245 808399

Email: sales@keison.co.uk

Please note - Product designs and specifications are subject to change without notice. The user is responsible for determining the suitability of this product.